

Pests of Sweet Potato

- Insect pests primarily reduce yield and quality
- Primarily the insect pests are two types

1. Foliar Insects

2. Soil borne Insects (Root)*

Sweet Potato Foliage Feeding Insects:

- Horn worm
- Army Worms
- Beetles
- Loopers
- White flies
- Aphids
- Thrips
- Cutworms

Sweet Potato Soil Insects

- Weevils- White fringed beetles
- White grubs
- Wireworms
- Flea beetles

Horn worm



Source: hawaiiaturejournal.weebly.com

Army worm (beet army worm)



(Source: keys.lucid.central.org)



(Source: keys.lucid.central.org)

Beetles (Source: keys.lucid.central.org)



Tortoise shell beetle



Green Tortoise beetle



Shell & Damage

Prepared by Dr. Chitturi

Looper



Source: organicgardeninfo.com

Whiteflies



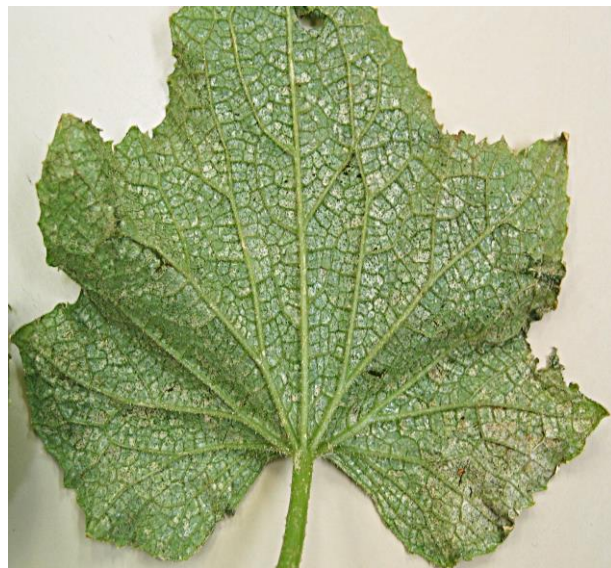
Source: alamy.com

Aphids



Source: sweethomenews.wordpress.com

Thrips



Source: ozthrips.org

White fringed beetle



(Source: keys.lucid.central.org)

White grubs



(Source: keys.lucid.central.org)

Wireworms



Source: walterreeves.com



Source: missouribotanicalgarden.org



Source: extension.uga.edu